
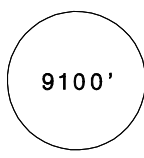
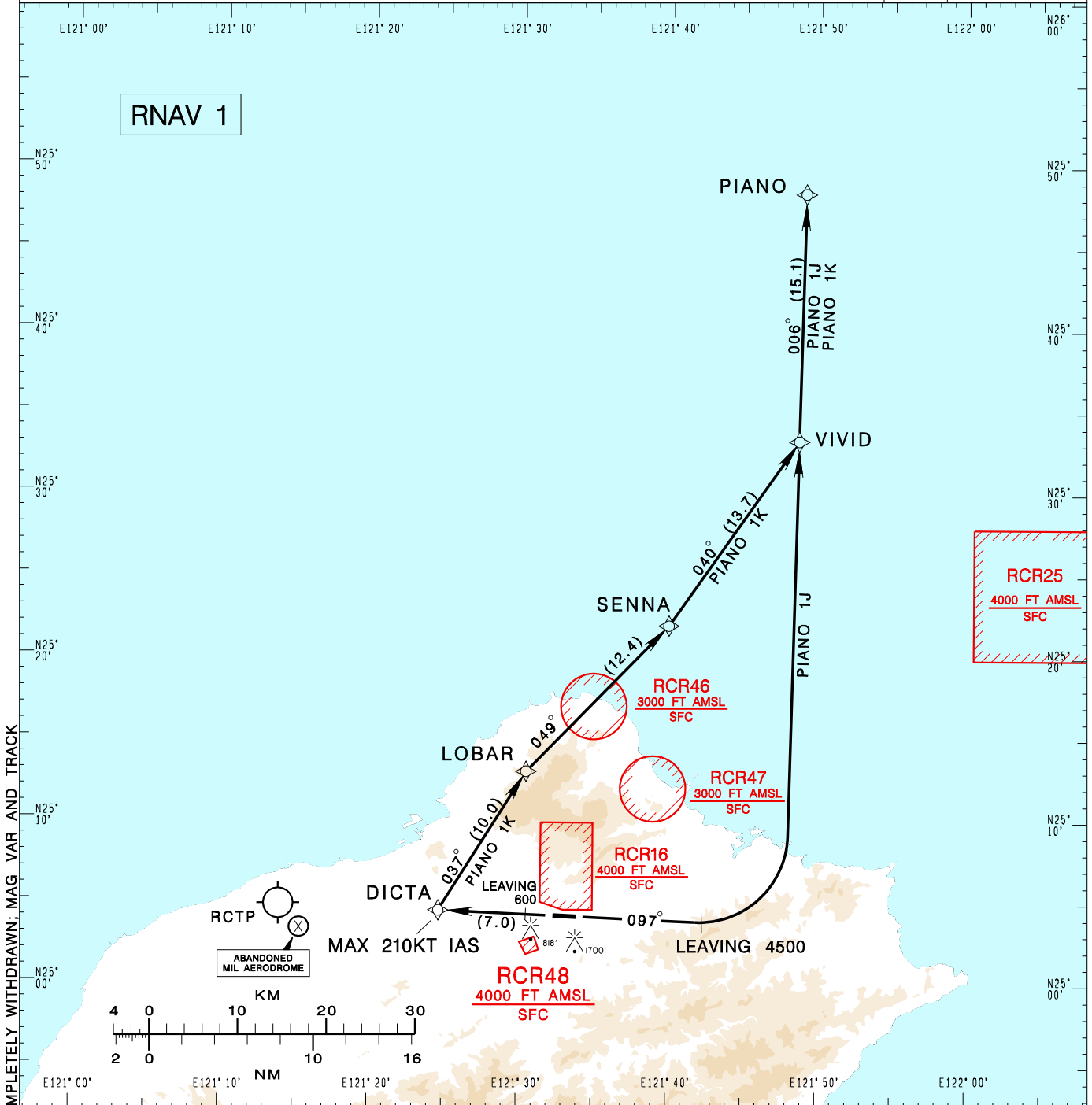


臺北/松山機場
TAIPEI/SONGSHAN AD

RCSS SID
PIANO 1J RNAV(RWY10)
PIANO 1K RNAV(RWY28)

TAIPEI APP 119.7 119.6 125.1	SONGSHAN TWR 118.1	ATIS 127.4 341	  MSA APP 25NM	
Apt Elev: 18'		Trans Level: FL130		Trans Alt: 11,000'
BEARINGS ARE MAGNETIC; DISTANCES ARE NAUTICAL MILES; ELEVATIONS, HEIGHTS IN FEET				



CHANGES: RECHART, RCR49 COMPLETELY WITHDRAWN; MAG VAR AND TRACK

PIANO ONE JULIETT RNAV DEPARTURE
Climb on HDG 097 until leaving 4500ft, then turn left direct to VIVID, then PIANO.

PIANO ONE KILO RNAV DEPARTURE
Climb on RWY HDG until leaving 600ft, then direct to DICTA, then LOBAR, SENNA, VIVID, then PIANO.

NOTE

- 1.PIANO 1J: Minimum climb gradient required 7.4%(450ft/NM) until 4,000ft.
- 2.PIANO 1K: Minimum climb gradient required 7.4%(450ft/NM) until LOBAR.
- 3.Caution high terrain around airport.
- 4.A 1700ft-high BLDG at 2.1NM south of THR 28.
- 5.A 818ft-high BLDG at 2NM SW of THR 10.
- 6.ATS surveillance required.
- 7.Aircraft equipped with RNAV system not capable to excute the 120° turn at DICTA shall advice ATC in advance for alternate departure procedure.